

**Upper limbs**

**L8**

# Objectives

At the end of this lecture student must know deep and superficial veins of the upper limbs.

# *Venous drainage*

**Of the upper limbs**

**Two sets of veins founded at the •  
upper limbs**

*1-superficial*

*2-deep veins*

# deep&supf.veins black and wight

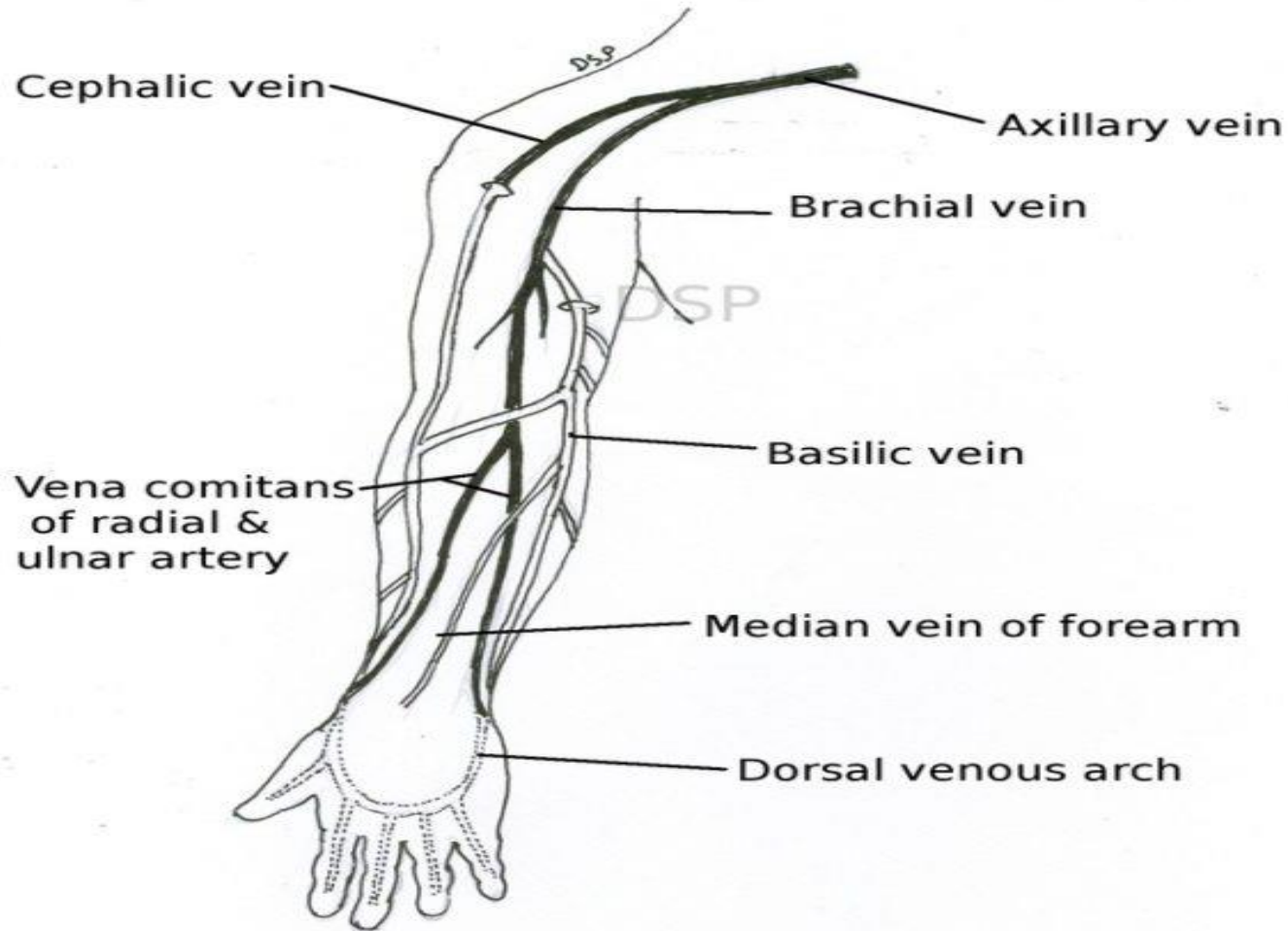
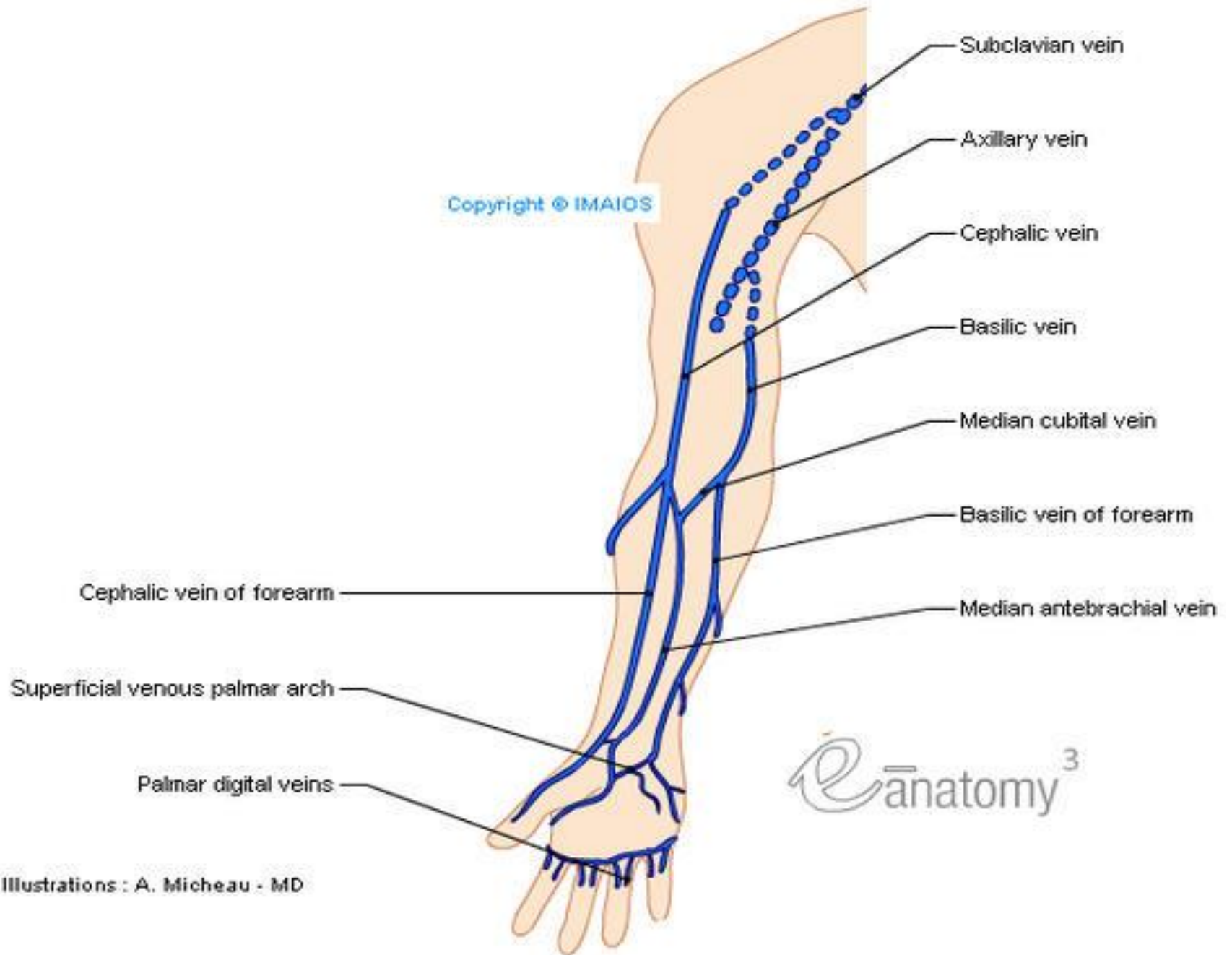


Fig. 10.1 Veins of Upper limb

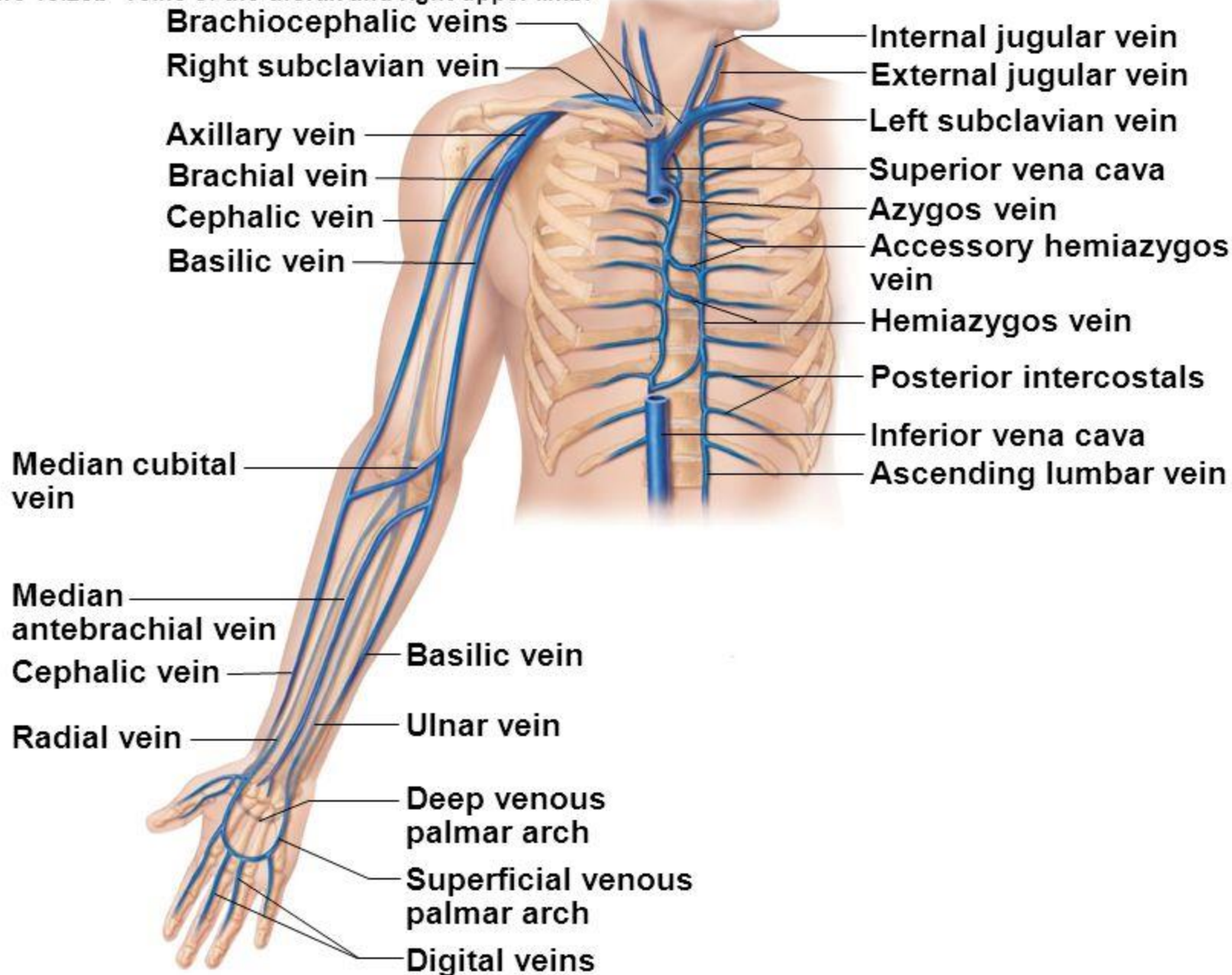
Copyright © IMAIOS



eānatomy<sup>3</sup>

Illustrations : A. Micheau - MD

Figure 19.28b Veins of the thorax and right upper limb.

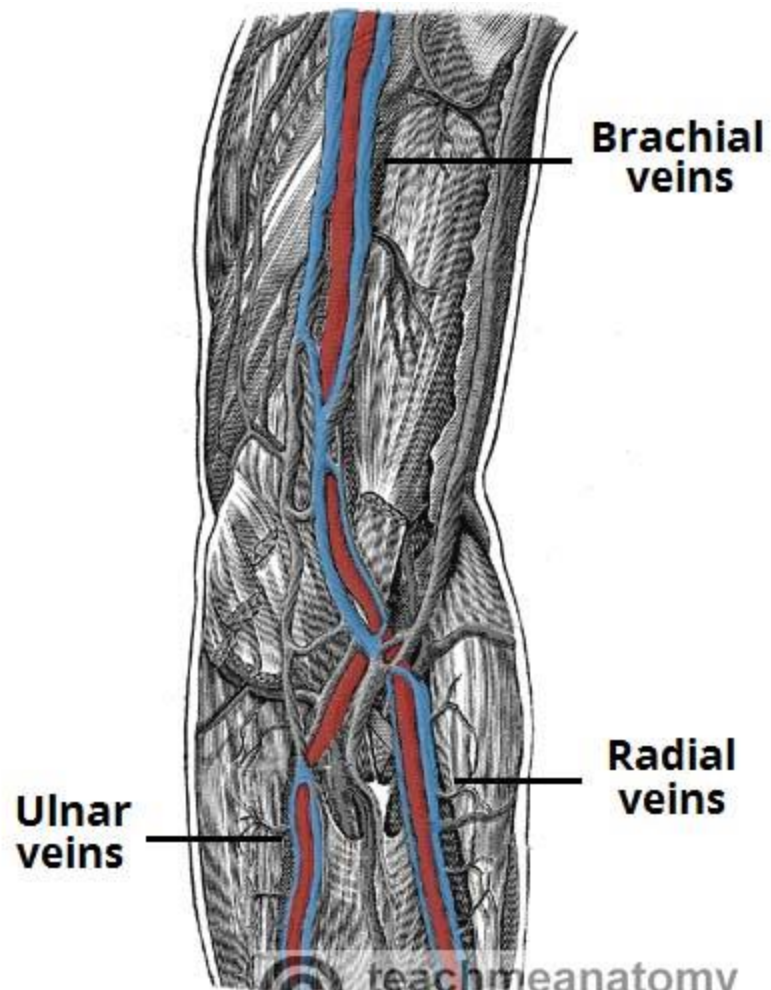


**(b) Anterior view**

# The deep veins

*Run deeply with arteries , taking their names and contain more numerous valves than superficial veins.*





**teachmeanatomy**

The #1 Applied Human Anatomy Site on the Web.

**Deep veins run with arteries**  
**and called venae comitans.**

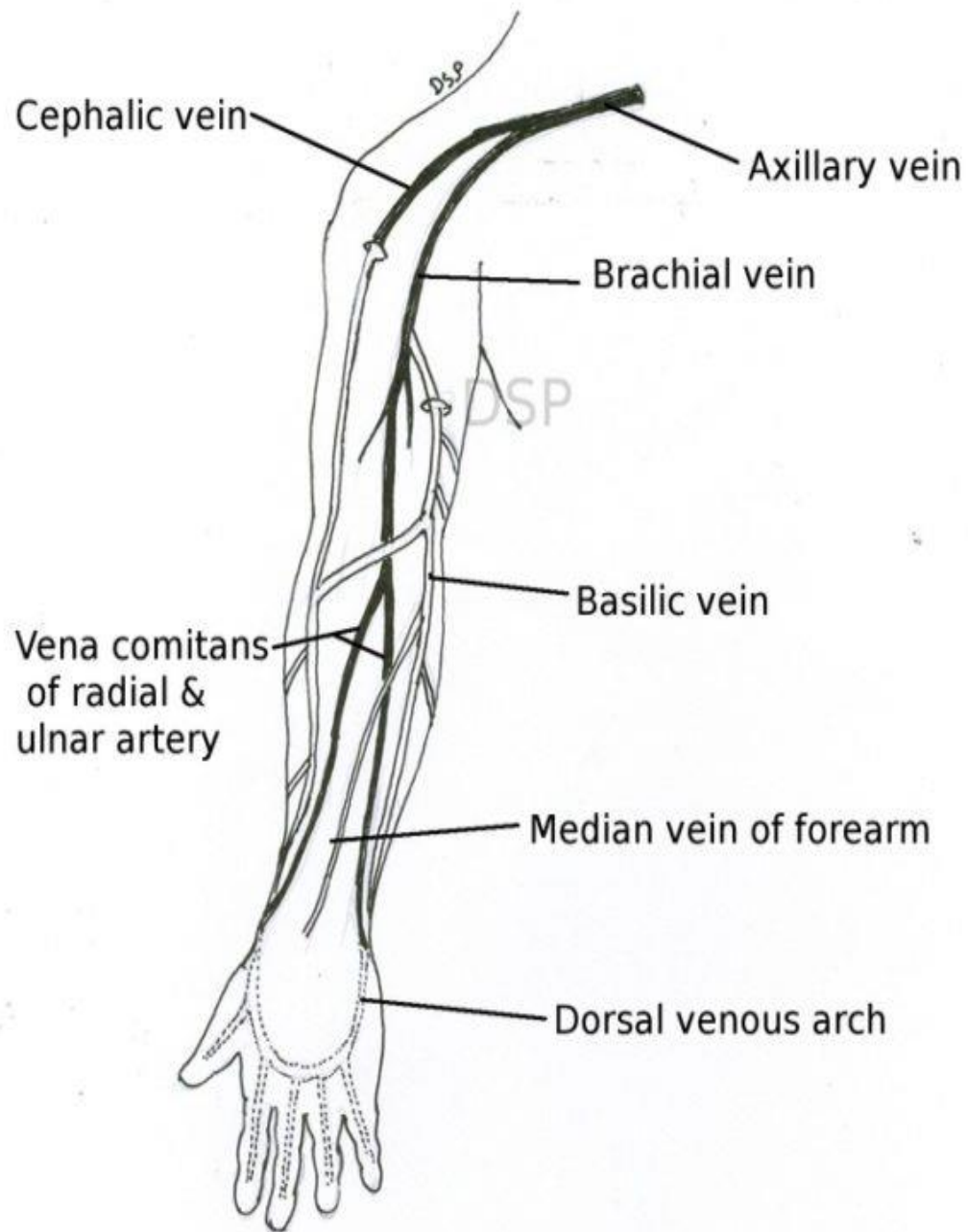
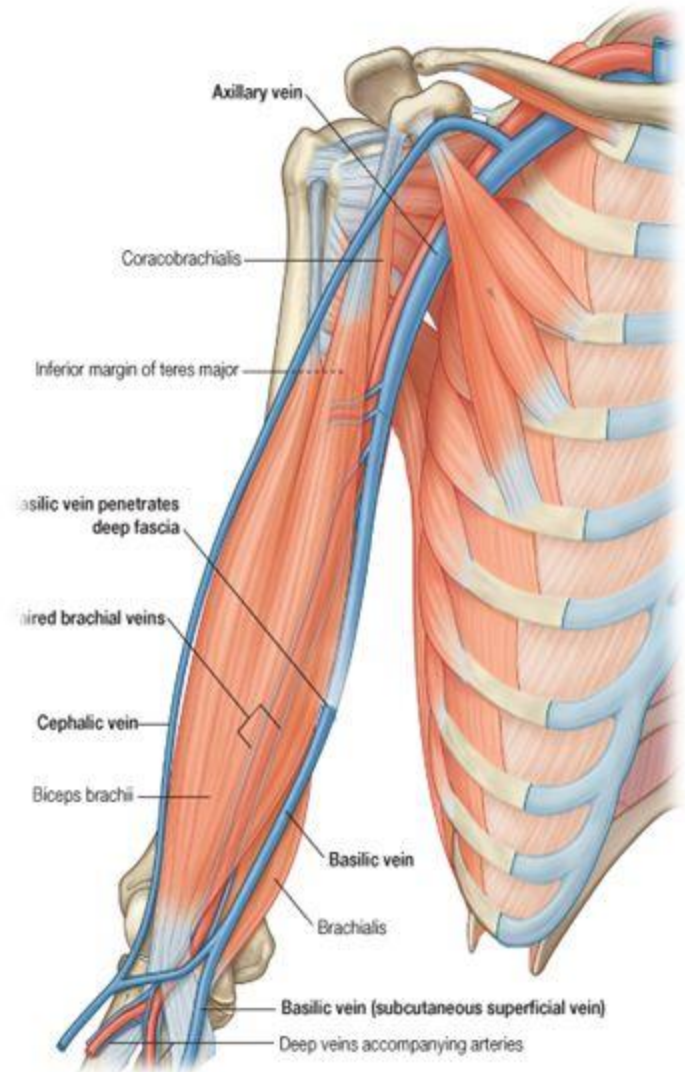
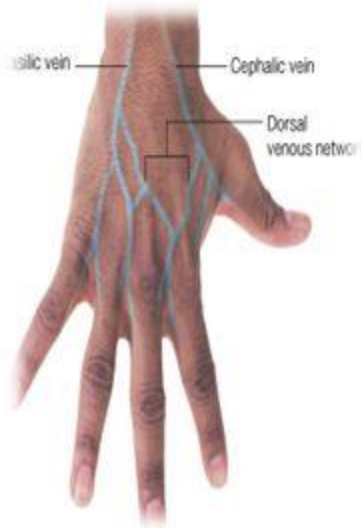


Fig. 10.1 Veins of Upper limb

# Veins of Upper Limbs

- ❖ Two divisions:
  - Superficial Veins
  - Deep Veins

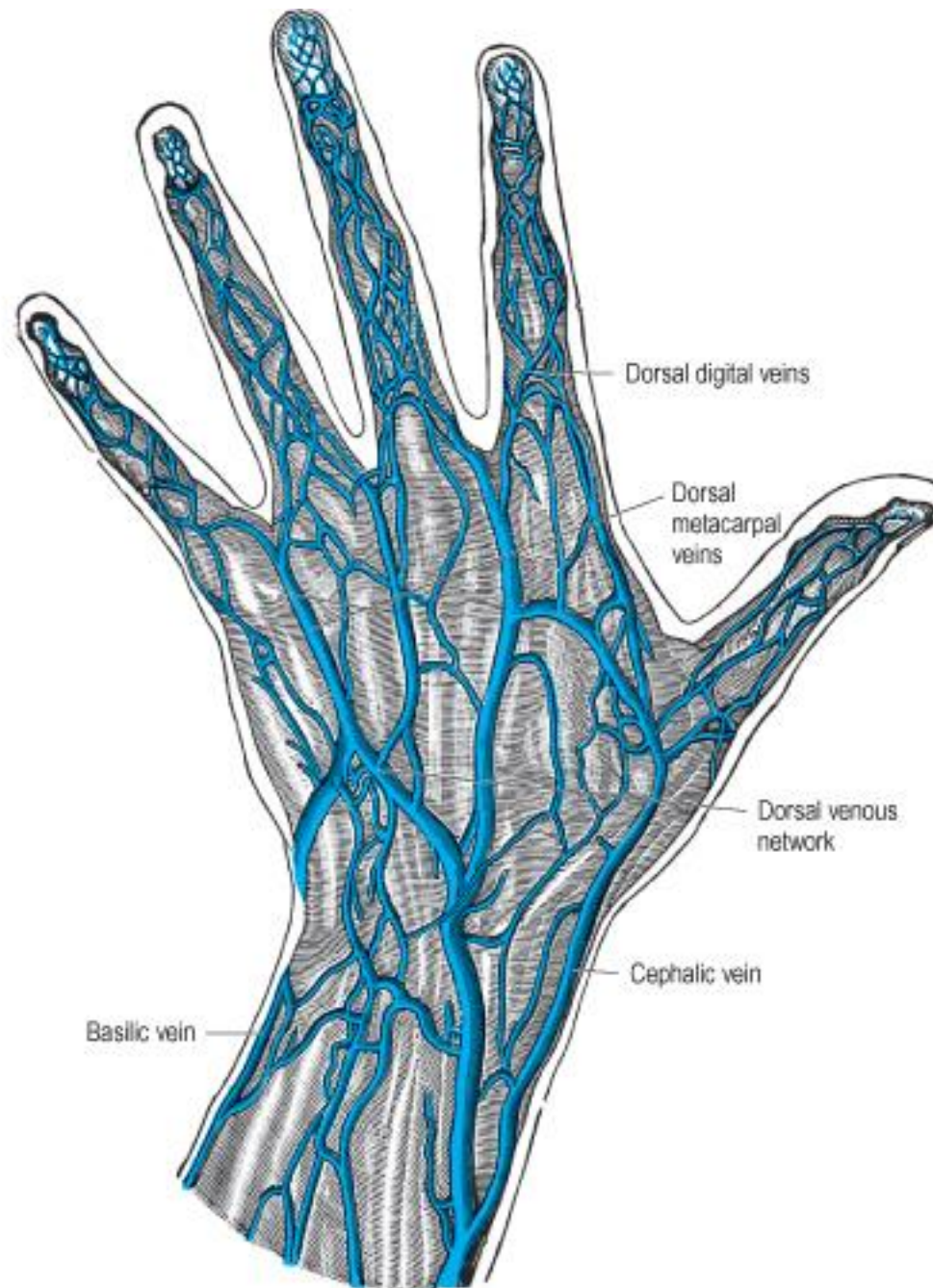




# Superficial veins

- Mainly cephalic and basilic veins
- Originated at the dorsum of the hand from dorsal venous network (DVN)
- *There is a free communication between the two sets by perforating veins.*

**Dorsal digital veins drain into three dorsal metacarpal veins to form the DVN then basilic and cephalic veins arise from its medial and lateral sides respectively.**

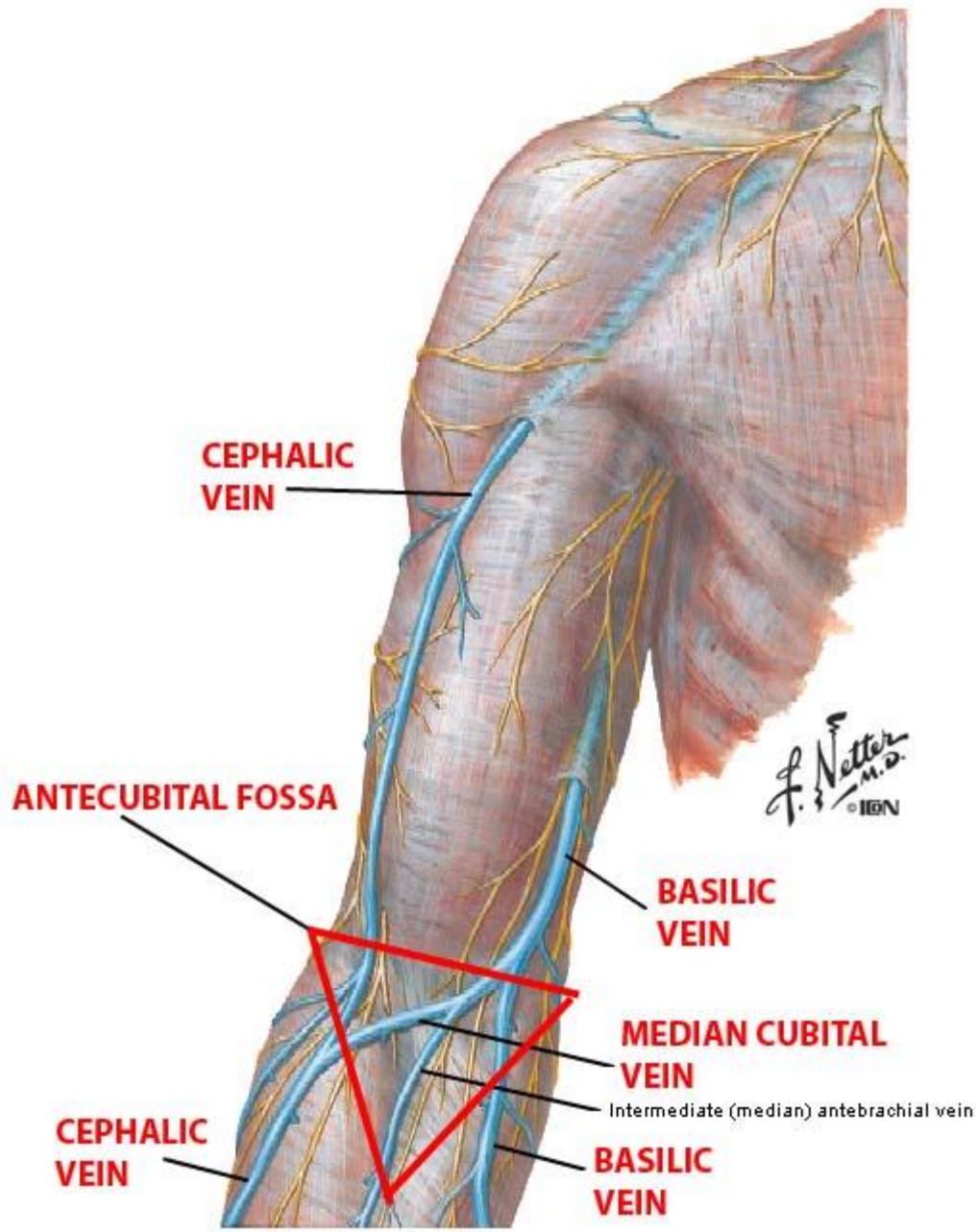




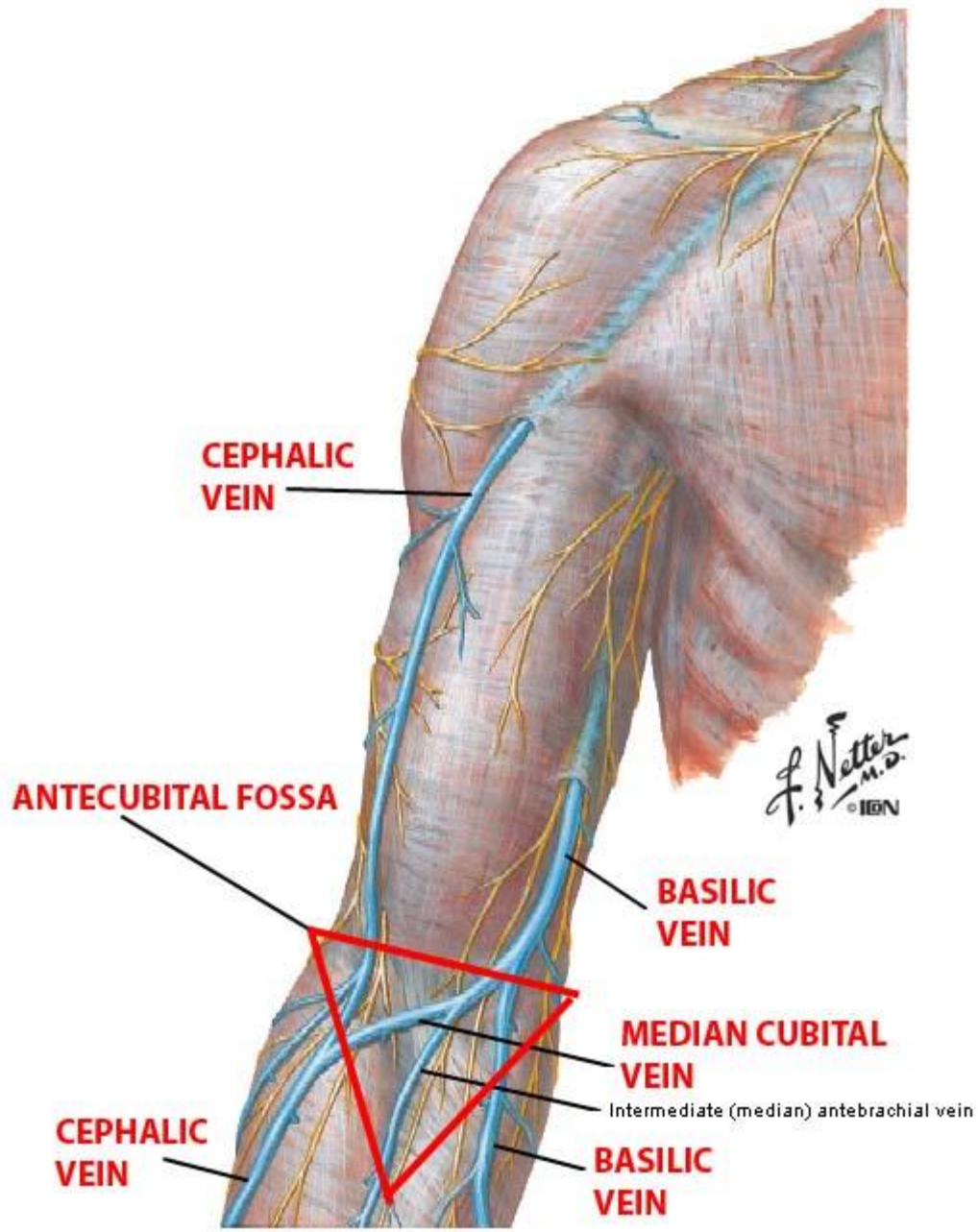
# *Cephalic vein*

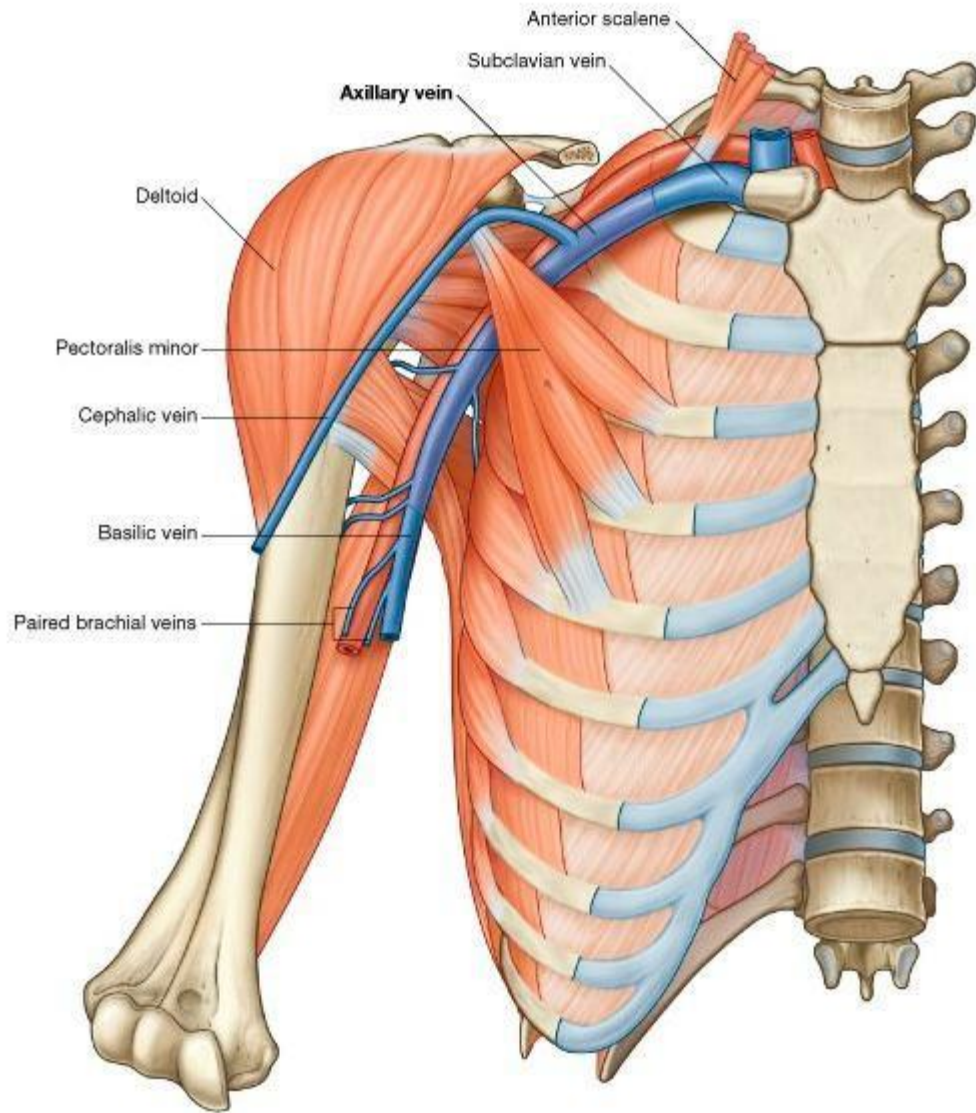
**Ascend anterolateral to the arm and •  
forearm**

**Anterior to the elbow it •  
communicate with median cubital  
vein that run obliquely across elbow**



*Then it courses superiorly •  
along the deltopectoral  
groove to join the terminal  
part of axillary vein.*





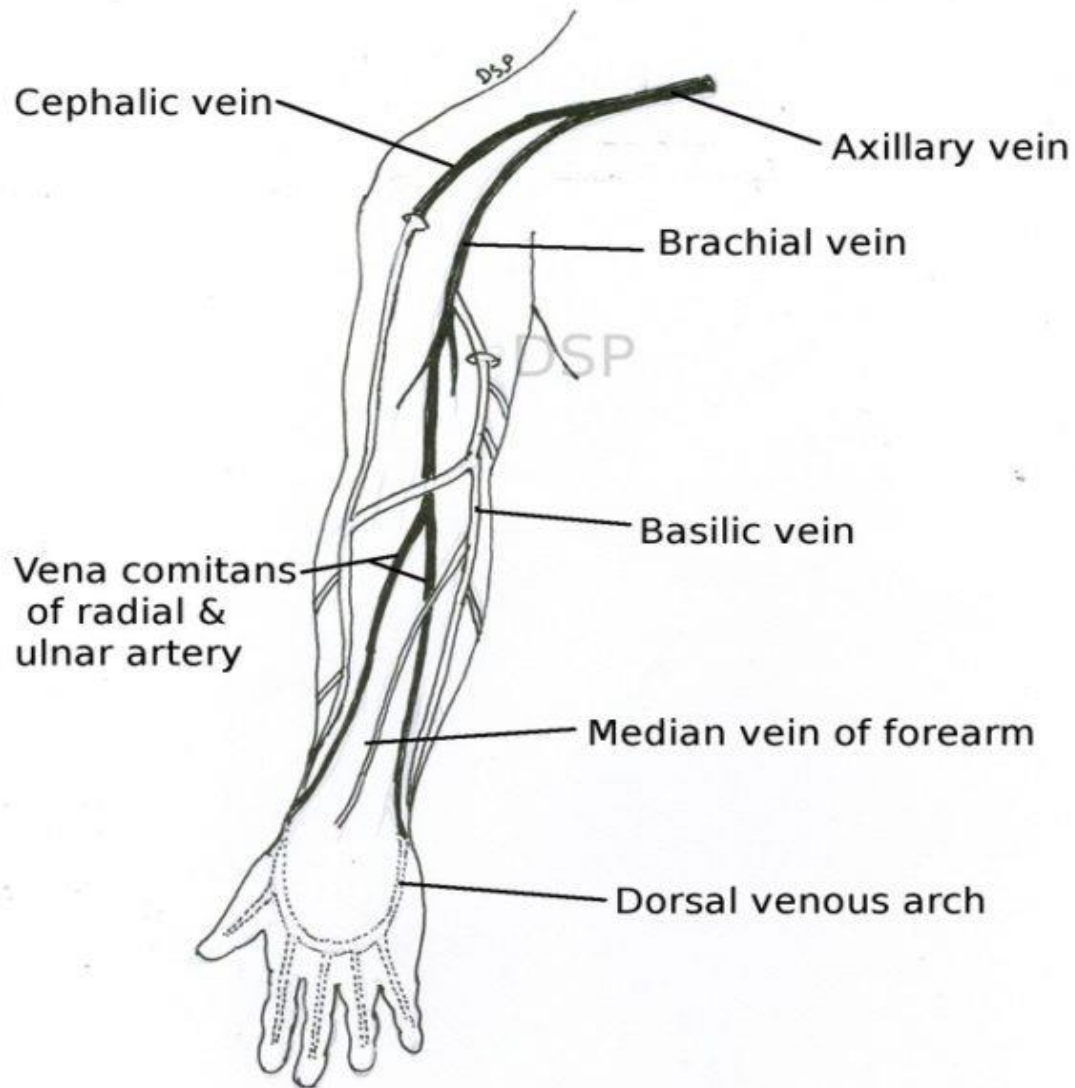


Fig. 10.1 Veins of Upper limb

## ***Basilic vein***

**Ascend superiorly along the medial side •  
of the forearm**

**Then passes deeply at the distal part of •  
the arm to join the origion of axillary  
vein.**

**So altimately both basilic and cephalic •  
veins drain into origion and termination  
of axillary vein respectively.**

# The deep veins

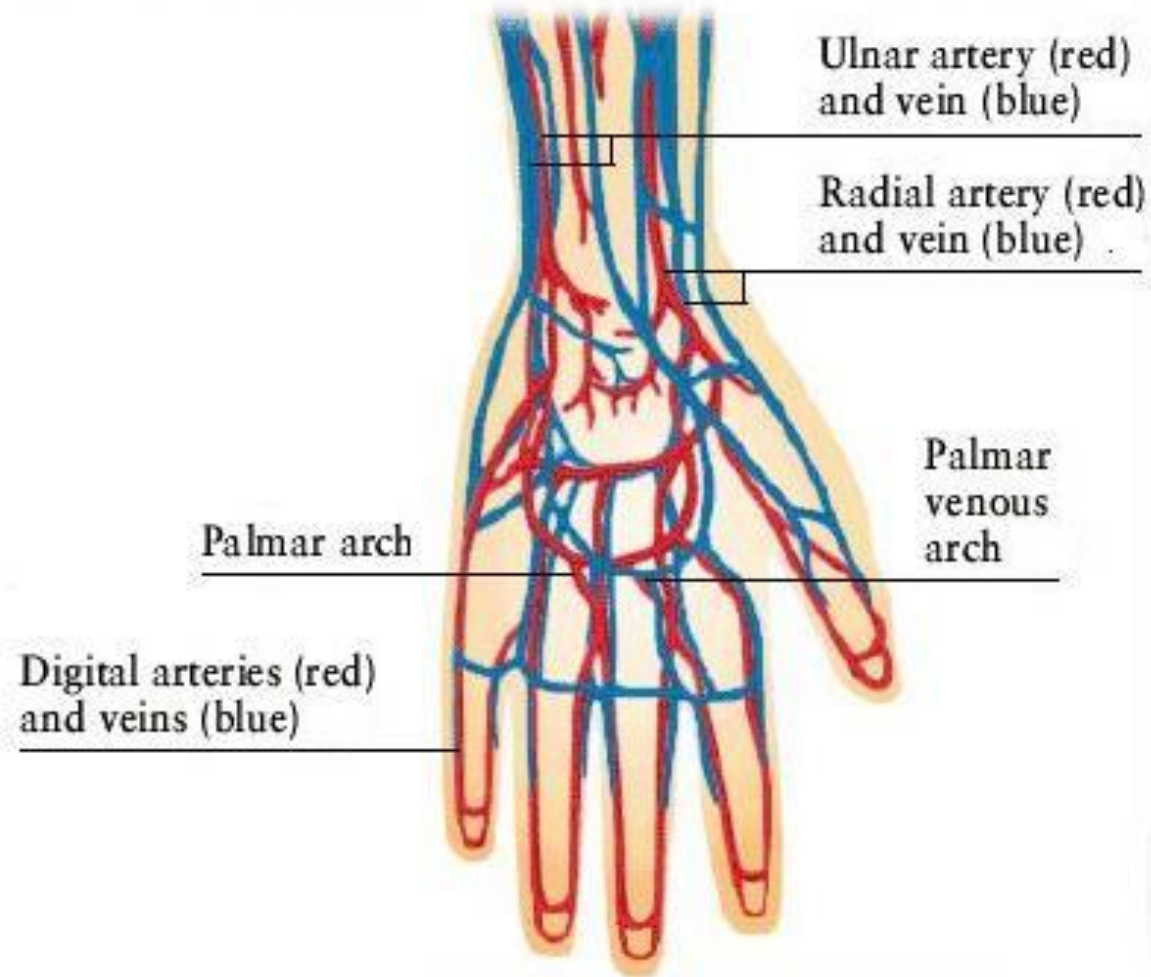
At the hand they arise from

*\*supf.venous palmar arch.*

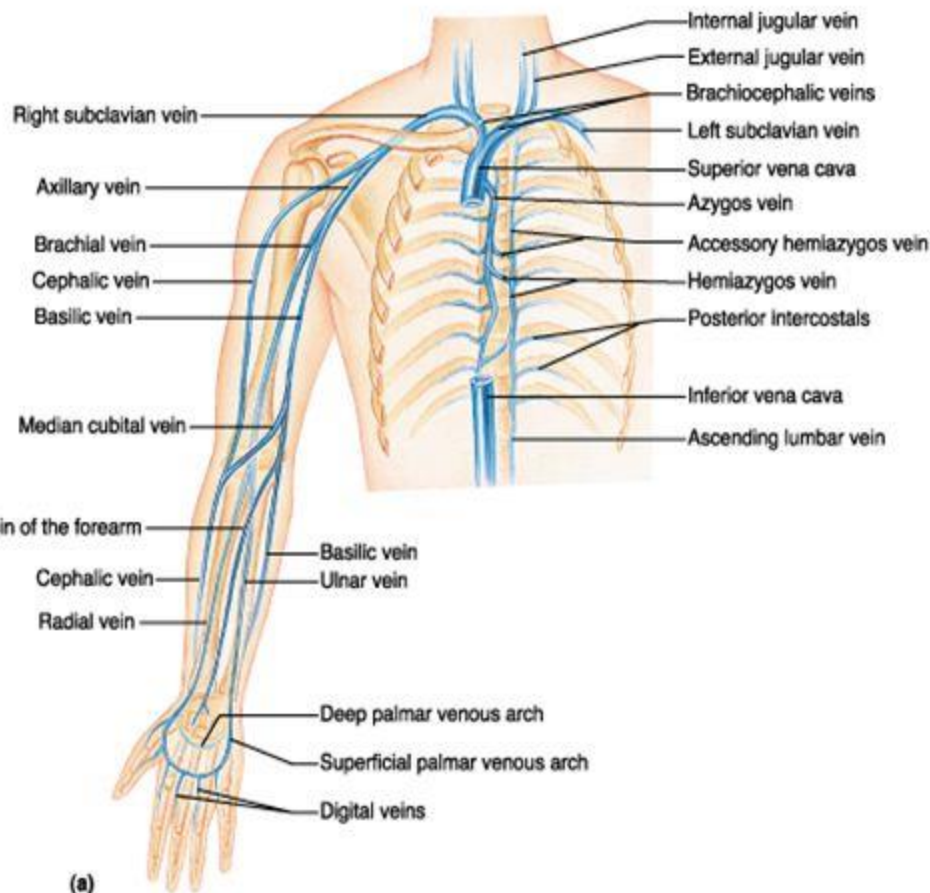
*\*deep venous palmar arch.*

*To drain into the deep veins of the forearm.*





# VEINS OF UPPER LIMB



- **SUPERFICIAL VEINS**
- DORSAL VENOUS NETWORK
- CEPHALIC VEIN
- BASILIC VEIN
- AXILLARY VEIN( BASILIC+ BRACHIAL VEIN)
- MEDIAN CUBITAL VEIN
- MEDIAN VEIN OF FOREARM
- **DEEP VEINS**
- NAMED ACCORDING TO COMPANIAN ARTERIES
- RADIAL VEIN
- ULNAR VEIN
- BRACHIAL VEIN
- AXILLARY VEIN

(a)

صور فوئكائ



Fb/Sewar.Comentat

WwW.FoHeKaT.Net

خلص الكلام

The End